



LONGBRANCH IMPROVEMENT CLUB

FOR THE BETTERMENT OF THE COMMUNITY



Newsletter
JULY 2008

SPECIAL INTEREST-JULY 2008

- Key Peninsula Fair 1
- More on the KP Fair 4
- Remembrance 5
- LB Salmon Bake 6
- Longbranch Mystery 6
- LIC Election Results 7



July 10th Teen Night 6-10pm	July 11th Fair Opens 11am-Mid	July 12th Fair 11am-Mid	July 13th Fair Closes 11am-6pm
-----------------------------------	-------------------------------------	-------------------------------	--------------------------------------

TEEN T NIGHT July 10th 6-10p.m.
RATED "T" FOR FUN!
 Thrilling Rides, Music, Pizza Eating Contest
 Karaoke, Food, Contests, Games, Prizes

2008 ATTRACTIONS and ENTERTAINMENT

Playing on the Main Stage all Day and All Night.

*Our Beer Garden and Dance Floor are next to the Main Stage!
Carnival Rides * Antique Tractor & Engine Show
Food Vendors * Crafts * Animals * Much More*

LITTLE BILL and THE BLUE NOTES

Saturday Evening 8:30pm - 11:30pm on the Main Stage

VALENTINE PERFORMING PIGS

Saturday 1:00pm - 3:00pm on the Main Stage

Fast Track Entertainment Kids Pedal Tractor Pull Competition

Events held all day on Friday, Saturday, and Sunday!

Kevin Wolfe - Magician and Master of Illusion

Friday 1:00pm - 3:00pm on the Main Stage

Shahdaroba - A Middle Eastern Dance Troupe (Belly Dancing)

Saturday 5:00pm - 7:00pm on the Main Stage

Happy Hans Music

Sunday 2:00pm - 6:00pm on the Main Stage

Mazey-T-Clown

All day Friday/Saturday/Sunday walking the crowds and on the Main Stage

Donn Allard & Renegade Train

Friday 8:30pm - 11:30pm on the Main Stage

Jazz Musette

Saturday 6:00pm - 8:00pm on the Main Stage

Blues Passage

Friday 6:00pm - 8:00pm on the Main Stage

And Home Depot's Free Kids Clinic all 3 days

The Key Peninsula Community Fair is held in Volunteer Park on the Key Peninsula.
Visit the NEW fair website at www.keyfair.org

INSIDE-July 2008

- President's Letter 2
- Meeting Minutes 3
- Events Report 4
- LIC Adopt-A-Road 6
- Dock Planting 6
- Membership Report 7
- LIC Contacts 7
- Longbranch Classifieds 8

PRESIDENTS LETTER...

The other day I was standing in a partially-weeded garden, chatting with Pat Thompson, and all of a sudden he said, "We need a sign. A big sign."

I didn't know what that had to do with flowers, although Pat spends a lot of his time converting ill-planned or unkempt gardens into pockets of grace and beauty.

"No," he went on, "it should be a sign saying 'Welcome To Longbranch' or maybe 'Welcome to the South Peninsula'. And it should say something like 'The Friendly Place'."

1st of all, he was right. 2nd, we couldn't decide where such a sign should go. And 3rd, the fact that we are a friendly community is evident by how we act towards each other.



So our target was lowered from a really big sign with an imposing message to a smaller, more intimate gesture. Maybe, one or the other of us opined, we could do with something that wouldn't have to be built or repainted. Not a sign, but a friendly wave.

Now, there are any number of kinds of waves. There is a gesture that is all too common in the commuter-clogged gridlock of Seattle or Tacoma but we're not going to go down that path. And then there is the wave of a lady we know, who sticks her arm out of the window (pity she doesn't have a sunroof) and gesticulates like the last survivor on a desert island trying to attract the attention of a passing jetliner. If one of the local gyms ever got ahold of it they would patent it as an anaerobic exercise routine. Maybe even an Olympic event.

Folks up on Lopez Island perfected the wave as a minimalist art form. When two cars approached one driver, at the last possible moment before passing (hey, this was back when 25 mph was the maximum road speed, not the minimum) would lift an index finger about an inch off the steering wheel. The trick was to wait until the last second. One eye blink too soon and

the other driver would have time to respond with an equally laconic finger lift. One eye blink too late and the cars passed, and the other driver spent the day worrying about the first's state of happiness.

What's the proper Key Pen wave? My guess, from watching folks bolting south across the Home bridge and into Paradise, is that it might be three or four fingers rising up off the 'wheel with the thumb still hooked underneath. Discreet, and yet emphatic.

But I do believe, in all seriousness, that Pat is right. Reaching out to friends, neighbors, acquaintances, is a powerful tool for social and morale good. It's the same force that lifts our foot from the gas pedal as we pass a pedestrian or a horseman, that swings us out to offer a little more comforting space. It's the force that allows someone entering Key Pen Highway a little extra room to exit their driveway. Or make a left turn. That keeps our hand from the horn when the car in front dawdles as the driver searches for an address. We each carry that sign Pat suggested, as plain as the smile on our face!

*The LIC, for a small non-profit social organization, puts one heck of an emphasis on supporting our schools. We fund, *originally by selling aluminum beverage cans to recyclers*, a couple of scholarships that give our South Peninsula kids a bit of a boost into higher education. We help fund environmental education in our neighborhood elementary school. This year we helped support the music program at the middle school. **Are we doing any good?** Well, we probably shouldn't be polishing our halos because the credit goes to our kids and their teachers, but Peninsula High School was recently lauded as one of the top high schools in the United States. We did our bit to help.

*Were you part of the crowd at "Beyond The Borders" last year? Great bands on stage, drummers, super desserts, tasty meals from the vendors, a spectacular art show - and in this time of belt tightening the fact the music and art was a gift from the LIC, Two Waters Arts Alliance and the Angel Guild made it even more delicious. Check out the calendar of upcoming events, and there beginning at noon on the first Saturday in August is a repeat performance. Most of the bands will be new - variety is, they say, the spice of life - but the talent, the verve and the energy will be cranked up another notch. You gotta be there, or you'll have 365 days to regret not making it.



General Meeting Minutes

Potluck Meeting June 18, 2008

Longbranch Improvement Club - The meeting was called to order by our President, Stu Stuhaug. The minutes were approved as distributed.

Our President and the Board thanked Dean Latshaw for doing a great job as Dock Chairman. On the 28th there will be a meeting of the dock committee, on the dock, thanking Dean Latshaw for his service.

Letters were presented from the Fifth Graders at Evergreen School, thanking the LIC for our scholarship of \$500 which went towards their time at Camp Seymour.

Vice President Dick Dixon read thank you notes from T. Michael Birch and Amanda Gould, who each received a \$1,200 scholarship from the LIC. They will be invited to our July meeting to speak.

It was also noted that the Board voted to give an honorarium to the Key Peninsula Middle School Jazz Band of \$500.

Joe Barrow reported that ticket takers are needed for the Key Peninsula Community Fair which will take place July 10-13. Our three captains for this year are:

Friday - Joe Barrow
Saturday - Doug Silvers
Sunday - Andy and Theresa Gano

The LIC has placemats "FOR SALE",
4 placemats for \$10.

Marlies Van Cise announced that the Longbranch Community Church will hold its annual Salmon Bake at the LIC on Saturday, July 26th. Tickets are \$12.

Stu Stuhaug announced that we are building a list of needed capital improvements.

Elections were held, for the year commencing in July for the following offices:

President : Stu Stuhaug
Treasurer : Tim Heitzman
Dock Chairman : Harry Faas
Membership Chairman : Sue Stuhaug

Congratulations to these four members; your service is appreciated!

Mark Jones, Dockmaster, reported on raising the prop.

Volunteers are needed to work on the "TRAILS" Project. Logs are being gathered/stored at the back of the field.

Carolyn Wiley, Events Chairman, reported:

We had a great Memorial Day Dance!
Flowers have been planted around the building.

July 20th - Viewing of the gardens at the home of Pat Thompson.

The tour is a member/guest event for members of LIC and TWAA.

August 2nd - Beyond the Borders

August 30 - Labor Day Dance

September 20th - Mark Runion's Band

October 4th - Fiber Arts Show



*Respectfully submitted by
Connie Hildahl, Secretary*

Life, Liberty and the
Pursuit of Happiness . . .



Happy July 4th

EVENTS REPORT...

MEMORIAL DAY - THANKS, MARK RUNION, THE BAND WAS GREAT FUN! Thanks to all of you who volunteered. There were about 220 people at the dance and it was a great to see so many LIC members. Final tally-the Club cleared over \$2585.

PLANTING FOR SUMMER COLOR WAS ON WED. JUNE 4
When the summer color begins to show, thank Sue Stuhaug, who planted the north bays and A.J. Million who planted barrels. While Sue and A.J. were weeding and planting, Stu Stuhaug attacked the blackberry & ivy jungle behind the building. Linda and Tom Kay have once again volunteered to keep the garden beds watered. Thanks also to Pat Thompson who has created a plan to make the driveway turn-around more appealing. Thanks to all of you for your beautification efforts.

✓ YOUR CALENDER FOR THESE UP-COMING EVENTS

NOTE: IF YOU SIGN UP FOR SET UP, BRUCE JEGLUM HAS SOLVED THE FINGER-MASHING PROBLEM OF THE UNDER STAGE STORAGE CARTS. THANKS BRUCE.

JULY 20TH PAT AND RUTH THOMPSON HAVE EXTENDED AN INVITATION TO MEMBERS OF LIC AND TWO WATERS ARTS ALLIANCE TO TOUR THEIR GARDEN. An E-mail reminder invitation will be sent for this free member/guest event. Angel food cake w/berries & whipped cream and coffee/lemonade will be served. If you have never visited Pat's garden you are in for an amazing treat. Volunteer opportunities are to help with:
* Chair & table transport * Set-up * Food service * Clean-up

BEYOND THE BORDERS, AUGUST 2.

Mark Runions has lined up an outstanding list of performers for the 2008 program:

Mooncoyne (*Irish/Celtic*)
Lief Tutusek & Lora Chiora (*Zimbabwe-Shona song & dance*)
Ancient Music (*multicultural instrumental*)
Abrace (*multilingual vocal and percussion*)
Dale Loy Drummers

Two Waters Arts Alliance will organize and present an Art Show KPCS van service from Marina begins @ 11:00. Peg Bingham has been busy testing desserts. Those selected are Baklava & Pavlovas. As one taste tester stated, "these desserts are to "die for!" Outside food vendors - Hawaiian, Lisa's Deli, ? And, yes, there are volunteer opportunities:

- * Aug 1. Set-up: tents, stage, delineate parking, vendor booths, beer garden.
- * Aug 2. a.m. set up sound system, tables & chill beverages. Members are asked to bring planters to improve the ambience of the beer garden. - call if you have a container that we could use.

ALSO NEEDED DURING EVENT:

- * Parking help * Dessert sales * Beer Garden: security/ ticket sales & servers.
- * Garbage/litter pick-up * Post event clean-up & take down - indoor/outdoor and kitchen.

AUGUST 30TH LABOR DAY DANCE
"The Daily Flash" returns.

JAZZ MUSETTE CONCERT SEPTEMBER 20
A family friendly event. (*Along the lines of Spuds'n Suds*)

FIBER ARTS SHOW/ KP HERITAGE FARM TOUR, 10/4, SATURDAY. 2nd Planning meeting was held on June 19 @ Wiley's

Participants signed on to date:

- * Earl Sorrels - collection of spinning wheels, restored antiques, all working, wants to have as many spinners as possible on site to use them (*Peg Robinson is recruiting spinners*)
- * Bryan & Biggs - Why have a life long skill - photo storyboard
- * Key Peninsula Historic Society (*Vaughn Museum*) has agreed to display some of their collection
- * KPCS van service from Marina begins @ 11:00 has lined up spinners, weavers, and a bobbin lace maker who will be on hand to demonstrate
- * Robin Bailey Gould - sail repairs
- * Donna Daily - tote bag maker
- * 2nd & 3rd grade knitters from Evergreen After Ours program

TRUNK OR TREAT, FRIDAY, OCTOBER 31

Debbie Ehrhardt, Chair - No worries

IF YOU HAVE AN INTEREST IN ANY EVENT OR ANY INTEREST IN VOLUNTEERING TO HELP WITH AN EVENT, PLEASE CONTACT Carolyn Wiley
884-9157 OR c.wiley@mac.com

MORE ON THE KP FAIR . . .

The fair needs volunteers to do misc. jobs (not ticket taking, that's managed separately) working in 2 to 4 hour shifts. Volunteers are needed for all three main days (Fri, Sat and Sun) of the fair, Thurs evening (Teen Night), the day before (July 9th) and the day after (July 14th). To volunteer, please call Julie Boardman at 858-6477 or email her at rainycityjewels@hotmail.com.

People can buy "pre-sale" all-day carnival passes for \$5.00 off (\$20.00 instead of \$25.00) and if they do, they get free admission into the fair. These are available at Sound Credit and Sunnycrest Nursery in Key Center and the Beach Hut in Home, until July 9th.

Thrus (Teen-Nite) 6p - 10pm - **Free admission for Teens!**
\$2.00 general admission. \$2.00 and free parking available

Directions: Take Hwy 16 from Tacoma or Port Orchard to the Purdy/Key Center exit., go south on SR 302 for 5 miles at which point highway becomes Key Peninsula Hwy (KPH). Follow KPH though Key Center, park is located on your right approx 3 miles south of Key Center.



Mike Hays, Building/Grounds Chair

BY JACKIE FURY

Remembrance

No doubt you will know from experience my dilemma tonight: I don't know what to write about and I don't want to do it. But I said I would . . . so I just decided to try the transparent approach, a variation of BE HERE NOW in which I get to haplessly bumble around. On paper. Where everyone can see it.

BE HERE NOW. Okay, right now I am thinking about the boathouse across Furrey Bay from Long branch which drew my attention from the first time I saw it. I knew immediately the function of the building from its form and placement: a sturdy, angular barn almost adrift on pilings, the spare structures I associate with the boathouses I grew up with in New England when that part of Cape Cod was a lot like the KP today, matchless beauty pitted against the reaches of development.



This boathouse takes me right back there. It is one of the oldest existing buildings on the peninsula, built by William A. Sipple who jumped off the *Messenger* into Filucy Bay in 1887 and claimed land (the east shore of Filucy Bay) already settled by Pierre Legard French Canadian guide for the Hudson's Bay Company at Nisqually, and his wife, the Haifa princess Filucy for whom the bay is named. Their personal histories and their marriage are the stuff of legends.

All accounts I have read agree that Princess Filucy met Pierre Legard in San Francisco where she was attending a parochial school or college. These sources agree too that she was one of the children of a great Northwest Coast Native tribal chief and his wife, a white woman from the East Coast. Legard had a classical education, graduating from the University of Toronto prior to leaving his old life behind in Canada. It is not yet clear exactly how they met or when they decided to marry and move to the area we call Longbranch. We do know they had a camp on the property acquired by Mr. Sipple.

That marriage produced one child and a series of personal losses brought about by misunderstandings and miscommunications resulting in the 30-year separation of Pierre and Filucy, kidnapping of the child, hidden identities and an ultimate reunion tainted by murder. Mr. Sipple was so smitten the saga of Princess Filucy's and her family tragedy he wrote an elegy to her entitled *The Story of Filucy* which is contained in an index to *Early Days of the Key Peninsula*. His description leaves no doubt about his attraction. "She had sparkling black eyes, shiny black hair, and a smooth olive complexion." Generations of Filucy Bay families were familiar with the story though most did not know about Sipple's manuscript.

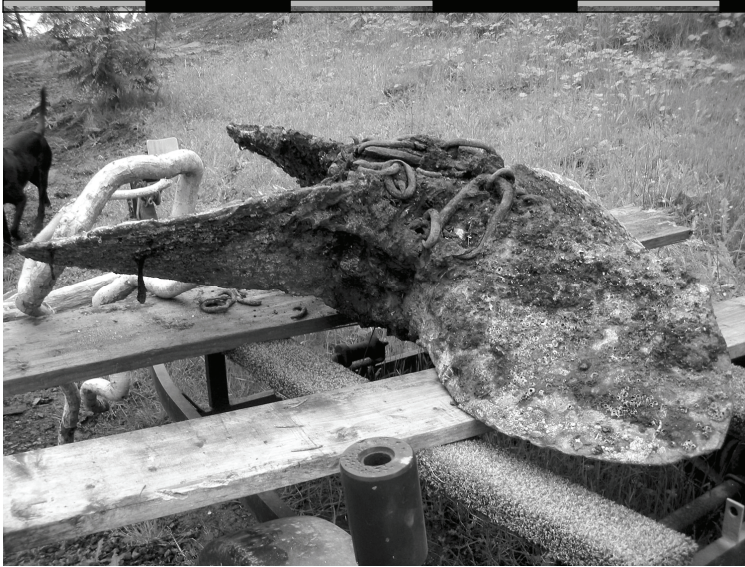
Sipple used his carpenter skills to build his boathouse, many Victorian inspired homes and boats for the Mosquito Fleet. He built elegant homes and steady boats. I am not aware of any other remaining structures of his design, but I would love to be wrong. There are photographs and sketches of his architectural designs in books commemorating early days of the peninsula. Rose Brier is one of the most famous. Get the books.

He also designed and built a lighthouse on McDermot Point. The lighthouse is gone now but still revered by lighthouse aficionados and the present owners Connie and Rich Hildahl. Sipple must have had unique and independent spirit: in an age when local Christians lived by the strictures of the German-Lutheran Church, William Sipple built a bowling alley in his boathouse to which he invited his friends of the heathen persuasion to secret Sunday games.

Mr. Sipple was a well-respected man, a justice of the peace for 40 years. The foreword to the Filucy story honors, "...long-departed comrades whom I met here in 1887 and who like myself cleared a few acres of land to build a home in the then frontier of this peninsula but have long since crossed the great divide whence no traveler has ever returned, to such is my "Story of Filucy" dedicated." He told a compelling story and he built a great boathouse.



Jackie Fury, LIC Historian



Longbranch Mystery - How long has it been at the bottom?

Divers, winch operators, bargemen, riggers -- it took an entire skilled team of LIC members to wrest a massive sunken treasure from the seabed under the Longbranch marina. The "treasure" is a BIG ships propeller, 75 inches from the tip of one of its four blades to the tip of the opposing blade. "Massive" is an apt description, for out of the water and more or less cleansed, it weighs an estimated 500 pounds.

The weight alone would have made the lift quite a project, but the propeller was buried deep in the bottom with only part of one blade exposed. It was also wrapped with a tangle of now very corroded and deteriorating chain. The prop itself appears to be cast ferrous metal. The mud, sea life and chain has been carefully cleansed from the upper surface of the prop, but at least on the top side, no maker's markers or casting symbols have been discovered.

How long has it been on the bottom? Good question. The marina docks were built over the propeller's resting place, so the prop most likely pre-dates our marina.

Is there an LIC member with any knowledge (or even rumor about) this prop? Where it came from, or how it came to be embedded in Filucy Bay?

If you do, please contact LIC Secretary (and history buff) Connie Hildahl, 884-1400.

Eighth Annual Salmon Bake - July 26th

A century only comes around every hundred years or so, which makes a centennial a pretty big event. This years marks the centennial of the Longbranch Community Church (Pastor Arlyce Kretschman), and with it the Eighth Annual community celebration of the church's very popular Salmon Bake.

Join the fun and join the crowds at this **milepost** event on the Longbranch Improvement Club grounds July 26, with the salmon and all the fixin's piping hot and ready to eat beginning at 2 p.m. The event lasts through 6 p.m. The food by itself is reason enough to show up, but you'll also be treated to fun and entertainment with a silent auction, clogging, a trout pond, hay rides, kids' games and more.

Cost is \$12 per adult if you plan ahead, or \$14 if you buy your carte d'entrée at the door. Kids from 7 to 12 pay but \$5, and the six and under set walk in free.

Advance tickets can be purchased at: Longbranch Marina, Sunnycrest Nursery, Charboneau, Home Store, Coast Hardware, Lake Kathryn plus from our own members Norma Larsen (884-4746) and Marlies Van Cise (884-5608). Tickets will be tickets available at the next general meeting on July 16.

The Dock Planting submitted by Theresa Gano

With sincere apologies for getting this in late - but with great intentions, Theresa Gano would like to give Robin Gould and Mary Ruth Fass a **BIG Thank YOU** for helping her with the planting of the flowers on the dock. The weather turned out to be great for a change. And the dock looked great for opening day. Thank you ladies!

June 7th KPS ROAD Pick Up - Thanks to those hardy souls who participated ! Our stretch of the road may be the cleanest section of KPS!



LIC Adopt-A-Road, Bob McFarlane

MEMBERSHIP REPORT...

Despite the fact that we had little going on in the month of June, 27 individual members managed to put in 89 hours of voluntary time. They were involved with hostessing, road clean-up, planting, dock work and several little odd jobs.

For the year our membership has given of their time a total of 995.5 hours. I don't think there is any organization on the Peninsula with as dedicated a crew. Many many thanks.

With that in mind. IT'S FAIR TIME. Give Joe Barrow a call (844-5585) if you would like to help out with gate keeping or give Carolyn Wiley a call (884-9157) if you would like to help with the LIC booth.

Would anyone like to be a host or hostess for the July dessert Meeting? I have a need for one able body. Give me a call 884-3685.



Submitted by Sue Stuhaug, MEMBERSHIP Chair

LIC Election Results . . .

Members of the Longbranch Improvement Club cast their ballots at the June general meeting of the LIC and in doing so established a new Board for the second half of the year.

Dennis Stuhaug returns for a second term as president, re-elected as was Tim Heitzman as treasurer and Sue Stuhaug as membership chair. Harry Faas joins the board as dock chair, replacing Dean Latshaw who completed two terms heading up the Dock Committee.

Under LIC bylaws, half the board stands for election/re-election every six months with members each serving a one-year term. Board positions coming up for re-election in December include Vice President, Secretary, Events Chair and Building Chair.

Under the LIC bylaws, the position of immediate Past President may be filled by a fifth elected trustee. With Linda LeBlanc completing her one-year term of Past President as of the end of June, that's the present case. In the event of a vacancy on the Board of Directors, the Board shall appoint a Regular Member to serve until the next election.

If you would like to suggest a possible Trustee, or if you'd like to serve yourself, either make that known to one of the board members or by a call or e-mail to the LIC phone number (884-6022) or the web page (lic@longbranchimprovementclub.org).

L I C C O N T A C T S

President . . . Stu Stuhaug
884.3685 suestu@centurytel.net

Vice President . . . Richard Dixon
884.2241 ramdixon@aol.com

Secretary . . . Connie Hildahl
884.1400 rhildahl@centurytel.net

Treasurer . . . Tim Heitzman
884.0577 timheitzman@earthlink.net

Bldg./Grounds Chair . . . Mike Hays
884.9498 mhays2@msn.com

Dock Chair . . . Harry Faas
884.6299 delilahhairymary@aol.com

Events Chair . . . Carolyn Wiley
884.9157 c.wiley@mac.com

Membership Chair . . . Sue Stuhaug
884.3685 suestu@centurytel.net

Dock Master . . . Mark Jones
884.5653 / 884.5137 ^{Dock} Lmjones@centurytel.net

LIC Building Rentals . . . Marlies VanCise
884.5608 / 884.6022 ^{Clubhouse} beachwoods@centurytel.net

LIC Bldg. Cleaning . . . Jerrod /Angelina Landsberger
253.255.2380 LZ_services@msn.com

Hospitality/Greeter Meetings . . . Carmen Davies
884.9128 cloudrider@cableseed.com

Kitchen/Food Services . . . Norma Iverson
884.4564 vgiverson@@centurytel.net

LIC Adopt-A-Road . . . Bob McFarlane
884.1314 robertmcfarlane1@mac.com

Scholarship . . . Dick Dixon
884.2241 ramdixon@aol.com

Nature Trail Development . . . Rich Hildahl
884.1400 rhildahl@centurytel.net

Office Volunteer . . .
POSITION OPEN

Website Manager . . .
POSITION OPEN

LIC Historian . . . Jackie Furrey
884.6438 blanche2004@msn.com

LIC Newsletter . . . Norma-Jean Gibson
884.6556 normajeangibson@remax.net

WEBSITE: www.longbranchimprovementclub.org

EMAIL: lic@longbranchimprovementclub.org

Longbranch Improvement Club
 PO Box 111
 Lakebay WA 98349

Longbranch Classifieds

To place your ad here . . .

Longbranch classifieds are free for members, low-cost for the community. Call Norma-Jean 253.884.6556 or send your ad copy to normajeangibson@remax.net



Lake Bay Nautical

Nautical · Tropical · Beach Decor
 Home · Beach · Gifts · Nautical Instruments

Olympic Village Shopping Center
 5500 Olympic Drive NW, Gig Harbor WA 98335
 253.851.3366 www.lakebayproducts.com



At Home, 98349



Right Brain Creations

Pat Thompson
 Landscape Design

(253) 884-5286
sailinghorse@comcast.net

BEST of Edmonds Meats & Seafood Co.

Wally Johnson 360-649-8877

Snake River Farms American Kurobuta Port & Kobe Beef
 Free Range Draper Valley Chicken Fresh & Frozen
 Seafood Midwestern Corn Fed Beef

CUSTOM PACKS AVAILABLE
 Delivered to YOUR DOOR FRESH . . . Twice a Week



robin designs
 custom sewing & canvas works
robindesigns@hotmail.com
 253.884.3030

Marlies VanCise

TRAVEL HOUSE

253.884.5608

Licensed for 24 Years Specializing in
 International Travel, Cruises and Groups



Honey-Do Handyman

Projects Inside and Out . . .

Call Jeff
 253.884.1685

Your Ad
 Placed Here?
 Contact Norma-Jean



www.SoundNeighborhoods.com



Norma-Jean Gibson
 Real Estate BROKER Associate
 RE/MAX Town & Country

253.238.1538