

# LIC NEWS



WEBSITE: [www.longbranchimprovementclub.org](http://www.longbranchimprovementclub.org)

EMAIL: [lic@longbranchimprovementclub.org](mailto:lic@longbranchimprovementclub.org)

## Presidents Letter...

The other day we opened our Great Hall and stage to the drama program at Evergreen Elementary School, giving the kids the opportunity to present Monkey Business to their families and friends. Evergreen has neither an auditorium nor a stage.

LIC member **DAVE DAHL** showed up early that day and set up the stage lights as well as the sound system. He came back in the afternoon and helped set up the chairs for the audience, both lugging chairs himself and showing others where to place the chairs and how to link them together into rows. He sat through the dress rehearsal, fine-tuning the stage lights and keying in the blackouts between scenes.

It takes two people to run our lights, one at the control panel for the stage itself and one in the back of the room to handle the house lights. Dave drafted a parent to run the house lights both the on-off switches and the dimmers.

During the late afternoon performance, with more than a hundred in the audience, Dave with his light board and with his hand directions to his assistant, helped create a read theatrical experience for the enthusiastic young actors. When the play was over and the applause died away, Dave helped collect the chairs and clean the Hall.

Dave is not our stage director, nor does he have descendants at Evergreen. He just wanted to give a helping hand to some deserving children.

**THERESA GANO** believes, although she probably wouldn't articulate it this way, is that boating should be fun and to be fun it should also be safe. And she's not one to let grass grow under her feet! She appointed herself as a one-person

committee to plan and develop an absolutely voluntary boat inspection program to be held at the Marina before our opening day celebrations and dock breakfast. She contacted the US Power Squadron unit in Tacoma who agreed to send over three qualified inspectors to inspect boats and notify the participating skippers of any safety deficiencies. She gathered a list of required safety equipment and made that available to anyone wanting to have their boat inspected. She contacted all the LIC members with boats at the marina, offering to set up appointments for them if they wanted to participate.

Remember, this is a completely voluntary program. On the other side of the coin, if a boater is stopped by federal, state or local law enforcement folks and they do not have proper safety equipment aboard including life jackets the skipper may be ticketed with some hefty fines. If it is Mother Nature that comes calling her fine may be considerably higher than mere dollars.

On Inspection Saturday Theresa showed up at the Marina early, coffee beans and a grinder in hand, and made a big pot of really fresh (and good) coffee for boaters and inspectors alike. She did all the things that kept the process moving smartly along, and when she found a little spare time in the schedule she recruited a guest skipper who just happened to be visiting our Marina to join the inspections.

Oh, yeah, in her spare time she fired up the BBQ and made hamburgers for the gang. Theresa is not our designated Safety Guru, she just wanted to give a helping hand to fellow boaters.



**ROBIN GOULD** lugged her heavy commercial sewing machine down to the Marina just before Opening Day and the Dock Breakfast with an open invitation to our members to make those little canvas and fabric repairs that we all know have to be done but we seem to let slide by. The seam that needs to be re-stitched, the patch that should be applied. It was her gift, of her skills and time, to our members. **Just someone that wants to give a helping hand.**

Incidentally, after carrying her equipment (no small load at that) off the dock she looked at the Longbranch sign with the grass sprouting up around it. She's the one who trimmed the grass before the Memorial Day celebrations.

**MARK JONES** has been an LIC member for decades, held many Club offices, and is presently our Dockmaster. **What he is not is a designated ticket salesman. But he does know our dances are fun,** and he equally knew that some of the boaters in the bay weren't aware of the Memorial Day dance and that they were welcome. Sure, Mark had tickets in the Marina office but in addition to the crowd at the Marina there were a lot of boats swinging on the hook (when is the last time you saw a mob of boaters like we hosted over Memorial Day?) Mark hopped into his wee outboard dinghy and as a 1-person Ambassadorial Crew called upon all the outlying vessels with a book of tickets for sale and a warm invitation to the dance - it was a full house.

I've probably embarrassed four people who did what they did because it was the right thing to do and not for any recognition. And I've missed a hundred more whose good works are hidden beneath their bushel baskets. But it sure is nice living in a community with folks like these. *Submitted by Stu Stuhang*

---

---

# General Meeting Minutes

MINUTES 5-21-2008

7:00 p.m. meeting

Our May meeting began at 7:00 p.m. with a wonderful music program presented by the Key Peninsula Middle School Jazz Band.

Following their performance, coffee and desserts were enjoyed by everyone.

Our President, Stu Stuhaug, led our brief business meeting. Minutes were MSP as presented.

Joe Barrow, chairman of the Nominating Committee, introduced the following slate of officers for the coming year:

**President:**

*Stu Stuhaug*

**Treasurer:**

*Tim Heitzman*

**Membership Chairman:**

*Sue Stuhaug & Gretchen Lippert*

**Dock Chairman:**

*Dylan Lippert*

Additional nominees will be welcomed by the nominating committee for the next thirty days, until our June meeting. Please contact a member of the nominating committee if you are interested.

Guest Mike Salatino introduced and asked for support of a petition which would give our Washington residents an opportunity to adopt the Oregon Assisted Suicide Practice.

Treasurer Tim Heitzman gave the Treasurer's report stating that we have generated \$12,000 operating profit year to date.

Carolyn Wiley, Events Chairman, announced that she has tickets for sale for the Memorial Day Dance coming up this weekend. If you buy a ticket tonight they are \$10 or for sale at the door for \$12.

Mark Jones, Dockmaster, reported that we are expecting a large crowd in this weekend for the Memorial Day events.

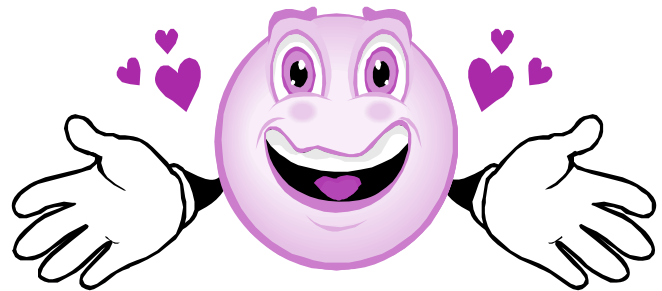
Doug Silvers reported that the Opening Day Breakfast at the Dock served 185 meals, netting in a profit of \$588.

*Respectfully submitted by Connie Hildahl,  
Secretary*

## *Membership Report . . .*

Not counting the Memorial Day Dance, because I haven't received that report yet, the LIC had 37 members put in a total of 305 hours for the month of May. 203 of those hours were provided by the 23 souls that planned, bought food for and served up a spectacular "Opening Day" breakfast.

May, from all indications was a very financially successful month and that is due to the many folks who give so freely of their time. Many "Thank You's" to all!



*We also took in a new member.*

*Please welcome Carol Opalinski!*

*Carol hails from Lakebay, she is a paralegal and she enjoys oil painting.*

*Carol is willing to help out on Special events, Historian/Archive activities and will help keep our roads clean.*

*Welcome aboard Carol! We look forward to meeting & working along with you.*

*Submitted by Sue Stuhaug,  
Membership Chair*

---

---

## EVENTS REPORT FOR MAY 2008

Opening Day May 3rd was a day of celebration for LIC members and guests. The kick off event was breakfast on the at the marina, followed by the Spring Regatta, and winding up with the cookout.

Opening Day Dock Breakfast was the smooth operation we have all expect from Doug and Judy Sylvers and their supporting cast of volunteers. Doug and team deserve a foot-stomping round of applause. They served just under 190 breakfasts and enriched the LIC coffers by almost \$600. Dave and Paula Wickland donated 2 beautiful models for a raffle. 2 very lucky LIC members, Lynn Carr and Ernie Evans walked home with raffle prizes.



Doug Sylvers, left, hams it up with pancake flipper Joe Barrow at the LIC Dock Breakfast. Keeping an eye on them in the background is John Biggs, also on the pancake flipping team.

Pat Thompson and crew organized the Regatta-see *The Thompson Report* for the list of big winners. *Page 7...*

Sharon Gearhart, Pat Muchmore, Sue Stuhaug, and Jeanne Weston managed the post-regatta barbecue. Is there anything more satisfying than *brats 'n buns*?

### Memorial Day Dance

Yoeman service was put in on an array of tasks by:

- \* Larry & Peg Bingham-Pre-Dance shopping, ticket Sales & emergency bar tender
- \* Cindy & Sandy Black-Decorations,set-up, ice/beer run, technical help-mid dance
- \* Gene & Louise Brown-Set-up, clean-up, pre-dance plumbing
- \* Lisa & George-from pre dance inventory to Sunday clean-up
- \* Eloise Colbert-Took charge of set-up
- \* David Dahl-Set-up, electrical
- \* Jackie Furrey-Decorations, door, place mat sales, bartender
- \* John Glennon-Set-up
- \* Diane & Wayne Gustin-bartending
- \* Michael Hays-Grounds prep, beer tester, supplier of drink cups, and bartender
- \* Tim Heitzman-poster design, wine purchasing, cash bar sales, etc., etc., etc.

- \* Phil Ingrahm-post dance clean-up, recycling, and grounds clean-up
- \* Mark & Laurie Jones-(Mark) ice/beer run, row-about ticket sales, set up, post dance clean-up, (Laurie) stage lighting set-up
- \* Dorothy Loomis-hand stamp and security
- \* Kelly McKellips-security
- \* Edie Morgan-set-up, kitchen, back-up for other workers, midnight clean-up
- \* Mark Runions-With out a band where would we be??? Set-up (big room), set-up performers, party management, clean-up, recycling
- \* Sue & Stu Stuhaug-oops! we forgot some necessary bar goodies
- \* Ray Tossavainen-set-up, security, clean-up
- \* Dave & Paula Wickland-clean-up
- \* Michael Xu-Bartending

### Special Mention and Thanks:

- **Mark Runions**, selection of Peaceable Lane assured that a good time was had by all. Departing guests seemed to be in agreement that the evening was a success and the count at the cash box supported this belief.
- **Tim Heitzman** for cranking out one more exceptional poster design, the word was spread.
- **Eloise Colbert** managed & directed set up and to Lisa & George Bryan who headed up Sunday a.m. clean-up. George also took to the road when the pop ran out...When the decision is made to provide free water & pop for Designated Drivers they tend to get very thirsty.
- **Mike Hays** and **Ron VanSommeren** who mowed and trimmed the grounds. Mike also put in a hard day's work cleaning out the shed and solving major appliance migration blight, then showed up with cups mid-dance and stayed to tend bar, much to the relief of harried bartenders. WHAT A GUY!
- **Cindy Black** who was an inspired decorator. When "make-do" wouldn't do, **Jackie Furrey** and **Gene & Lousie Brown** scoured the county to bring back a bit of flash and flags.
- **Sandy Black & Mark Jones** handled the ice and beer run. Then Mark came back with Laurie who set-up the stage lights.

**All in all 33 members put in 149 hours, and their efforts raised over \$2580 for the LIC.**

FYI: Key Peninsula Community Services van and driver Kap Pease provided 6 hours of shuttle service between the Marina and Building. Donations benefit the Food Bank and Senior Center. Kap was pleased by the generosity of the visiting boaters - his donation bucket was overflowing.

Volunteer Opportunities contact Carolyn Wiley  
(253) 884-9157 c.wiley@mac.com

---

---

**“They Rocked the Rafters”**  
*Key Peninsula Middle School Jazz Band*

Here's a well-deserved tip of the LIC fedora to the young musicians of the outstanding Key Peninsula Middle School Jazz Band under the baton of teacher and advisor Meg Mansfield. They took to the LIC stage at the opening of our general meeting May 21 and rocked the rafters with a scintillating, toe-tapping and head-bobbing mix of standards and songs we wished we knew better. What makes this 20-plus member big band even more spectacular is the fact it is a strictly extra-curricular activity. The musicians gather BEFORE school to learn new arrangements, to rehearse, and (*we suspect*) to jam a bit. They played to an audience of more than 100 people, of which a bit over 70 were LIC members and the rest family and friends of the talented performers. That's one of our largest non-Christmas general meetings. If we can cajole them into coming back during the next school year we should simply pack the Great Hall. “They put on that good a show!”

*Adopt A Road Program . . .*

**Road Pick-Up Scheduled . . .**  
**Calling All Help on Saturday 6/7/08**  
**Meet at the LIC Clubhouse at 10 AM**  
**Thanks, Bob McFarlane 253.884.1314**

**Announcing 2008 KP Farmers' Market**

Schedule for KP Farmers Market:  
Opening Day, June 22  
15 Summer Sundays from Noon to 4 p.m.  
Last market date September 28  
Booth Fees: \$10 per week or \$100 for 15 weeks  
(*Two producers may share a booth*)

Farm referral service fee \$10: The Manager's Booth will feature advertisement, fliers, and brochures of farms offering produce at their farm location. The one time fee for this service is \$10.

**KP Farmers' Market Information Contacts:**  
Tara Froode 253-884-6350  
email: Tarafroode@centurytel.net  
Holly Henrick, Market  
Manager, 253-884-3649  
email: femeros73@yahoo.com.



Greetings! It is my pleasure to welcome you back to the 2008 Key Peninsula Community Fair (KPCF). For the 8th year in a row the KPCF will bring together folks from near and far to enjoy and celebrate life here on the Key Peninsula. Our hard-working Fair Board of

Directors has spared no effort to bring you this year's array of entertainers and events. They will inspire, entertain and may even enchant you. This year we'll have that same great carnival back and the entertainment line up will feature “locals”. We're putting a little extra effort this year to emphasize the “P” in KPCF. Sunday evening is Polka-Fest!

Over the past 7 years, the Fair has grown from modest beginnings to an event spanning four days with a little bit of everything for everybody. Come for the music, the rides, vendors, the petting zoo (Agrivision), or simply take a break to enjoy lunch. Come and enjoy “your fair”. Did you know the fair is a non-profit entity, there is no paid staff or board members? The fair is yours – come and enjoy it! Afterwards, every penny the fair makes goes right back into your community, through its owners: The Key Peninsula Business Association, the Key Peninsula Civic Center and the LIC.

Every year the Fair grows and innovates. Last year we added a Wine Competition which will return for 2008. This year we're adding a Farmers Market and moving the Beer Garden next to the main stage. We expect both to improve on what has been a year-to-year improvement process.

**Key Peninsula Community Fair - 2008**

The 2008 Fair dates are July 10<sup>th</sup> - 13<sup>th</sup>  
Thurs (Teen-Nite) 6p - 10p. Free admission for Teens!  
Fri/Sat 11a - midnight Sun 11a - 6p.  
\$2.00 general admission.  
\$2.00 and free parking available.  
Carnival all day ride passes are on sale June 1<sup>st</sup>.  
\$25.00 during the fair or \$20.00 if bought in advance.  
With every carnival pass bought in advance (prior to July 9<sup>th</sup>) that person also get FREE admission! You can buy presale passes at Sunnycrest Nursery and Sound Credit in Key Center  
Questions? Go to [www.keyfair.org](http://www.keyfair.org)

We hope that your experience as our very welcome guest is a fun and rewarding one. We are delighted to provide so many opportunities for you to meet and greet old and new friends. As you will see, a great deal of planning and hard work has gone into making this Fair one of the best ones ever. But only you can validate our endeavors - your pleasure is both the reason for and the measure of our efforts.

**So Come Enjoy the Fair!**

Michael Hays, 2008 KPCF President

✓ **MARK YOUR CALENDAR**

**JULY 20, TOUR THE THOMPSON GARDENS**

Pat and Ruth Thompson invite LIC Members to spend a pleasant Sunday afternoon with them. If you have never visited Pat's garden you will be amazed by the variety and beauty that greets you at each turn. *Carolyn Wiley, 884.9157*

**Election . . . LIC**

There is still time to throw your hat in the ring for the upcoming election the June election, that is, when we elect four officers and board members.



**4 Positions OPEN**

- President
- Treasurer
- Dock Chair
- Membership Chair

The positions of Vice President, Secretary, Events Chair and Building Chair come up for election in December.

Nominating Committee Chair Joe Barrow unveiled a preliminary slate of candidates at the May 21 General Membership Meeting, and stressed that nominations would remain open until the election at the June 18 general membership meeting.

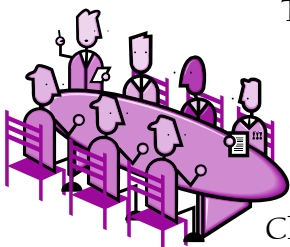
**Candidates now running include:**

**PRESIDENT**  
Dennis Stuhaug

**TREASURER**  
Tim Heitzman

**DOCK CHAIR**  
Dylan Lippert

**MEMBERSHIP CHAIR**  
Gretchen Lippert & Sue Stuhaug



Those LIC members wishing to run for office, or wishing to nominate a person for office, should contact any member of the Nominating Committee:

Chairman Joe Barrow, John Biggs, Rich Hildahl, Mark Jones and Mike Hays.

**Planning Meeting for the October 4, LIC Fiber Arts Show  
Heritage Farm Tour - Thursday, 6/19/08 at 7:00p.m.  
Carolyn's house--call 884-9157 for directions**

Join us! The only qualifications are a willingness to share your ideas and a modest degree of enthusiasm, mild interest in fiber arts and the people who create things out of thread, yarn & fabric. Experience is not necessary, but will be welcomed! A side benefit is a chance to visit and do bit of dessert taste-testing.

So far, Key Peninsula Historical Society has agreed to create a display from their collection, several individual artists have expressed willingness to demonstrate weaving, spinning, bobbin lace making, and felting, and three vendors have signed on to display. At the first meeting a brain-stormed list of specific types of fiber arts was generated and leads on a group of Kid Knitters, a costume designer, and a spinning wheel and loom restorer/maker were being pursued. YOUR help in expanding the list so it is a comprehensive as possible, identifying people who may wish to participate as an exhibitor, vendor or demonstrator, and working out details of logistics, hospitality, etc. is needed. Not sure you want to volunteer? Come and listen, there may be something that catches your fancy.

**\$ - Free MONEY for the LIC - \$**

You can turn your grocery receipts into a donation to the LIC Scholarship Fund without spending another penny! Dottie Loomis, our tireless dance greeter and receipts director,\* does all the fussy work to turn your receipt slips from Peninsula and Bridgeway Markets into solid cash. It's very easy for you. After you've put away all the groceries (sorry, Dottie will not help here), sit down with your sales slip and a pen. Cross out the beer, wine, tobacco and video rentals. This is not to prevent Dottie from recording your lifestyle. It's because the grocer won't pay us for those items. Lottery tickets, neither. Then bring your marked slips to the next meeting. Dottie will total the reimbursable items and submit the stack to the nice folks who will mail the LIC Scholarship Fund a check totaling 1% of your purchase. It all costs you nothing but a few minutes, & you will be directly helping support a college education - local students.

**Dine On Your Favorite Marina**

**Longbranch Marina  
Place Mats**

- *Stunning aerial photo of Filucy Bay*
- *A chart leading you here*

**Four for \$10**

**At the LIC OR (253) 884-6022**

---

---

## Remembrance (formerly Looking Back)

BY: Jackie Furrey

The column had to have a new name.

I knew it had a familiar ring.

I wanted a title that carried the sense of **not just history but our connections to history** and what those experiences evoke in us.

I wanted a title that conveyed history as a reflective interaction between one's mind and the artifacts of the world which precedes us...which is a big order, and a title that was not too...anything. When I quit thinking about it, the word that worked was *remembrance*. It is a word that carries feeling in addition to sound and meaning. "I don't think I chose it as much as it chose me or something like that".

Naming the title is no small part of my motive is signing up for this duty. I can call it anything I want. It remind me of living in Alaska and having the luxury of so many sled dogs that I could name them any darn (I didn't say doggone) thing I wanted. I finally had a brown-eyed dog named Buster, for one, but I also had Salty Dog, Yankee Dog, all the variations on dog names you ever wanted to use. I had Peaches, Freckles and Sam, a darling little blue-eyed mama dog out of Peaches and Sam we called Ootikoo which meant Little Girl in Upik or Inupiat I think. We called her Ootie.

### Remembrance.

Today is Memorial Day 2008. Next year I will know to write this column in April.

When I decided to take on the function of historian I thought I would find the minutes from the first club meeting and use them progressively as a framework or context for each column. Silly me. Anyway hats off to Harry Faas, who would prefer to remain anonymous, for making some sense of the system and for handling the role of unofficial historian for longer than is reasonable.



*The earliest record we could find was the treasurer's report of July 1937.*

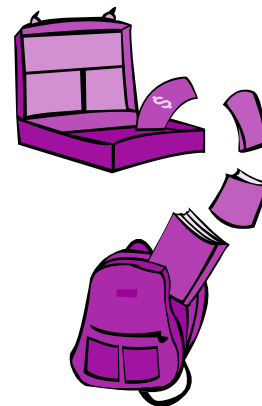
*The largest deposits to the club's account for the fiscal year were receipts from the dances totaling \$13.31.*

*The largest expenditure was for taxes totaling \$22.65.*

**Some things never change.**  
LIC Historian, Jackie Furrey

### 2008 LIC Awarded Scholarships:

When most of us were enjoying a concert from the middle school Jazz Band, LIC vice president Dick Dixon was off working on Club business. He presented our two college scholarships to two very deserving young adults from Key Peninsula South.



### LIC Scholarship Recipients . . .

#### T.J. Burch

A young man who is an Eagle Scout & who is interested in the technical side of music

#### Amanda Gould

A young woman who is interested in studying architecture

We'll have more information about our recipients and our scholarship program in a forthcoming issue, and we hope to have both of these fine young people at one of our meetings.

## 2008 Spring Regatta Results



*Mark Jones awards the  
1st Place trophy to Gene Brown*

What a wonderful dock breakfast we had before our spring race. We started off the day with no wind and a steady light rain, causing the race start to be postponed until 11:00AM. But at 11:00 the wind came up and we had fair to good winds for the rest of the race. The race to Nisqually Flats and back to Longbranch was fairly fast with 2.5 hours for the first boat to finish and with all the rest of the boats finishing within the allotted time.

The winner of the race, yet again, was Gene Brown on Mystic, with Sandy Black 2<sup>nd</sup> and Dylan Lippert 3<sup>rd</sup>. All three received trophy's and Gene Brown will be listed on the perpetual trophy in the marina office.

We had a great meal after the race, thanks to Sue Stuhaug and her helpers. We will have another race this Fall, hope to see you there. *Pat Thompson*

# L I C C O N T A C T S

President . . . Stu Stuhaug  
884.3685 [suestu@centurytel.net](mailto:suestu@centurytel.net)

Vice President . . . Richard Dixon  
884.2241 [ramdixon@aol.com](mailto:ramdixon@aol.com)

Secretary . . . Connie Hildahl  
884.1400 [childahl@centurytel.net](mailto:childahl@centurytel.net)

Treasurer . . . Tim Heitzman  
884.0577 [timheitzman@earthlink.net](mailto:timheitzman@earthlink.net)

Past President . . . Linda LeBlanc  
884.1499 [L8161@hotmail.com](mailto:L8161@hotmail.com)

Bldg./Grounds Chair . . . Mike Hays  
884.9498 [mhays2@msn.com](mailto:mhays2@msn.com)

Dock Chair . . . Dean Latshaw  
884.0808 [baylakebum@centurytel.net](mailto:baylakebum@centurytel.net)

Events Chair . . . Carolyn Wiley  
884.9157 [c.wiley@mac.com](mailto:c.wiley@mac.com)

Membership Chair . . . Sue Stuhaug  
884.3685 [suestu@centurytel.net](mailto:suestu@centurytel.net)

Dock Master . . . Mark Jones  
884.5653 / 884.5137 <sup>Dock</sup> [Lmjones@centurytel.net](mailto:Lmjones@centurytel.net)

LIC Building Rentals . . . Marlies VanCise  
884.5608 / 884.6022 <sup>Clubhouse</sup> [beachwoods@centurytel.net](mailto:beachwoods@centurytel.net)

LIC Bldg. Cleaning . . . Jerrod /Angelina Landsberger  
253.255.2380 [LZ\\_services@msn.com](mailto:LZ_services@msn.com)

Hospitality/Greeter Meetings . . . Carmen Davies  
884.9128 [cloudrider@cableseed.com](mailto:cloudrider@cableseed.com)

Kitchen/Food Services . . . Norma Iverson  
884.4564 [vgiverson@@centurytel.net](mailto:vgiverson@@centurytel.net)

LIC Adopt-A-Road . . . Bob McFarlane  
884.1314 [robertmcfarlane1@mac.com](mailto:robertmcfarlane1@mac.com)

Scholarship . . . Dick Dixon  
884.2241 [ramdixon@aol.com](mailto:ramdixon@aol.com)

Nature Trail Development . . . Rich Hildahl  
884.1400 [rhildahl@centurytel.net](mailto:rhildahl@centurytel.net)

Office Volunteer . . . Harry Faas  
884.6299 [delilahhairymary@aol.com](mailto:delilahhairymary@aol.com)

Website Manager . . . Bob Mazur  
884.1061 [rhmazur@harboret.net](mailto:rhmazur@harboret.net)

LIC Historian . . . Jackie Furrey  
884.6438 [blanche2004@msn.com](mailto:blanche2004@msn.com)

LIC Newsletter . . . Norma-Jean Gibson  
884.6556 [normajeangibson@remax.net](mailto:normajeangibson@remax.net)

# Longbranch Classifieds

To place your ad here . . .

Longbranch classifieds are free for members, low-cost for the community. Call Norma-Jean 253.884.6556 or send your ad copy to [normajeangibson@remax.net](mailto:normajeangibson@remax.net)



## Lake Bay Nautical

Nautical · Tropical · Beach Decor  
Home · Beach · Gifts · Nautical Instruments

Olympic Village Shopping Center  
5500 Olympic Drive NW, Gig Harbor WA 98335  
253.851.3366 [www.lakebayproducts.com](http://www.lakebayproducts.com)



At Home, 98349



## Right Brain Creations

Pat Thompson  
Landscape Design

(253) 884-5286  
[sailinghorse@comcast.net](mailto:sailinghorse@comcast.net)

## BEST of Edmonds Meats & Seafood Co.

Wally Johnson 360-649-8877

Snake River Farms American Kurobuta Port & Kobe Beef  
Free Range Draper Valley Chicken Fresh & Frozen  
Seafood Midwestern Corn Fed Beef

**CUSTOM PACKS AVAILABLE**  
Delivered to YOUR DOOR FRESH . . . Twice a Week



**robin designs**  
custom sewing & canvas works  
[robindesigns@hotmail.com](mailto:robindesigns@hotmail.com)  
253.884.3030

Marlies VanCise

## TRAVEL HOUSE

253.884.5608



Licensed for 24 Years Specializing in  
International Travel, Cruises and Groups



## Honey-Do Handyman

Projects Inside and Out...

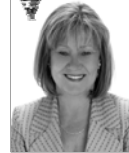
Call Jeff  
253.884.1685

## NEEDED - LIC Webmaster

Contact Stu @ 253.884.3685



[www.SoundNeighborhoods.com](http://www.SoundNeighborhoods.com)



**Norma-Jean Gibson**  
Real Estate BROKER Associate  
RE/MAX Town & Country

253.238.1538

LONGBRANCH IMPROVEMENT CLUB NEWS . . . PAGE 8

Longbranch Improvement Club  
PO Box III  
Lakebay WA 98349