



LONGBRANCH IMPROVEMENT CLUB

FOR THE BETTERMENT OF THE COMMUNITY



Newsletter
September 2008

SPECIAL INTEREST-September

- Fiber Arts 1/4
- LIC Dock Work Party 3
- LIC Adopt-A-Road Event 4
- LIC Fall Work Party 4
- Jazz Musette Concert 4
- Beyond the Borders . . . 5
- LIC Dates to Remember 5
- Fall Great Escape Race 6
- "Gonna Be a Bear" 6
- KP Author's Evening 7



INSIDE-September

- President's Letter 2
- Meeting Minutes 3
- Dock Report 3
- Events Report 4
- Building/Grounds Report -
- Membership Report 7
- LIC Contacts 7
- Longbranch Classifieds 8

Exhibits
Demonstrations
Vendors

Fiber Arts
Every Fiber of Our Being
Artistic to Utilitarian
Traditional to Modern

Free Admission
Saturday October 4
10am to 4pm

Longbranch Improvement Club

4312 Key Peninsula Hwy S.
45 minutes from Tacoma

Call 253 884 9157

Presented by LIC and
Key Peninsula HarvestFEST Farm Tour

Presidents Letter . . .

Summer is on the ebb, and all those tasks we put off in the spring because there was so much time ahead of us seem to be catching up with us. I had planned to triage my invariably messy shop and to put the tools I really use into some sort of order. Instead I merely piled tools and materials on the bench, rooting through the layers in search of the wrench or nail set I wanted at any particular moment. Truth be told, it's a time-wasting and inefficient system.

I was down at the Marina the other day, and saw one of those little tasks that could be quickly attended to if I only had the right pliers at hand. You see, we don't really have a selection of tools on the dock, for our own maintenance work as well as for the helping hand that the LIC and Marina is known for. We could poddle up to one of the big box stores and buy a selection of tools for a couple of hundred bucks? I think there is a better way. Over the next couple of weeks I'm going to attack my workbench mess, and I'm positive that I'll discover a few duplicate but still usable tools that will find their way down to the Marina. If others did the same we might assemble the foundation of adequate tool boxes at the Marina and at the clubhouse itself. I think I'll also **paint the tools bright pink, or some such color, just to remind folks to return them.**



REMEMBER THOSE OLD RECRUITING POSTERS that showed Uncle Sam pointing right out of the picture at you, with the slogan "Uncle Sam Wants You!". Well, we don't have uniforms nor do we require salutes, **BUT WE ARE RECRUITING FOR A FEW GOOD FOLKS!**

If you can help with any of these following, either link up with any board member at the next meeting (*share desserts at the LIC beginning at 7 p.m. Sept. 17*), or call or e-mail me from the Contacts list in this newsletter.

Stu Stuhaug, LIC President
884.3685 suestu@centurytel.net

LIC NEWS . . . PAGE 2

Could This Be YOU? We need a few folks that are interested in telling the LIC story *through publicizing our events and activities*. Part of it is helping spread the word about an upcoming event, and part of it is recording the events we do - from our Beyond The Borders music and art festival to our sailboat regattas.

Or Maybe This Is YOU? We need an office volunteer, to handle the paperwork we generate and to file said paperwork into our cabinets. I'd suspect it would take no more than a couple of hours a month.

Or How About This - Is This For YOU?


The State Highway 302 corridor study has found new life. The LIC has been invited to participate, with the next study group meeting Sept. 20 up in Rosedale. To make our voice heard, and to keep abreast of what may come from the process (*Yeah, and these studies have been going on for decades and SR 302 merely gets more clogged*) we should have an interested person at the meeting. Any takers or volunteers?

A bit more about the HELPING HAND reputation... The other day Lynn Carr and Mike Maroney had returned to the Marina after checking their crab pots, and struck up a conversation on the dock with a guest boater who had a malfunctioning steering system on his boat. Could have been a cable, could have been a block, but whatever it was - it was putting a serious crimp in his boating vacation.



Our two members took a look at the problem, Mike went home for tools and a couple of spare parts, and he and Lynn put the steering system to rights. I've probably embarrassed the two of them for sharing this story, because they didn't do it for praise or for money. They were just being neighborly.

In doing so they saved a family's vacation, and they provided that family with a warm experience that will bring their boat back to Filucy Bay again and again. About that same time we had another boating guest who looked around the docks and exclaimed that Longbranch was everything a marina should be: a beautiful setting, friendly, and perfectly tranquil.

 **Stu Stuhaug, LIC PRESIDENT**

General Meeting Minutes

Longbranch Improvement Club
General Meeting - August 20, 2008

A special thank you to Sue Stuhaug for organizing and serving tasty cheeseburgers and hot dogs.

The meeting was opened by our President, Stu Stuhaug.

Carolyn Wiley discussed the Labor Day Dance coming up soon. A request was made for a decorations chairman and a clean up crew. Please contact Carolyn.


Sandy Black announced the Fall Regatta to be held September 27th. This will be a "crab festival". Members are asked to collect crabs up to the 27th. There will be crab races, crab "size" prizes, and crab will be cooked on the dock. Bring a side dish to compliment the crab. This coming Monday evening an organizational crab meeting will be held on the dock.

Sue Stuhaug, Membership Chairman, announced that we have 116 memberships.

The Fiber Arts Show will be here, at the LIC, on October 4th. A big thank you to Carolyn Wiley for all she does for the LIC!

The oven in our kitchen was in need of serious repairs and these repairs are complete. It was MSP that we cover the cost of these repairs of \$1,000.

This year the LIC is in charge of the New Year's Eve Festivities. If you are interested in working on this fun event, please contact Carolyn Wiley.

 Respectfully submitted
Connie Hildahl, Secretary

dock Report . . .

Quite regularly, someone asks if they can help with work at the clubhouse or marina. Also, some LIC members need hours of volunteer work to qualify for privileges. So, here are some jobs just waiting to be done . . .

- Overhanging vines and branches alongside the marina parking lot need to be severely pruned. Especially around the electrical power boxes. A tall stepladder (or orchard ladder) and prunint tools (saw and heavy-duty loppers) would be required. If you don't have tools, we will find some (does anyone have a tall orchard ladder?). This job could take at least 3-4 hours.
- The yellow bull-rails on the dock need to be refurbished. Good knew pads would probably be a necessity, along with a scraper, stiff (wire) brush, and a paint roller. LIC will provide the paint (does anyone want to donate some yellow paint?). This job could take 8 hours, or more?
- The blue metal gateway on the upper pier needs to be refurbished. A stepladder, stiff (wire) brush, and a paint roller would be required. LIC will provide the paint. This job could take at least 4-5 hours.
- The sani-cans area (concrete pads and adjoining latticed framework) needs to be refurbished. A tall stepladder would be required. LIC will provide the paint. This job would be best accomplished after Labor Day when two of the sani-cans have been removed for the season.
- Staining of the handrails along both sides of the upper pier needs to be completed. Required tools would include a scraper, stiff (wire) brush, paint roller, and a paint applicator for the many inside corners. LIC will provide the paint. Good knee pads would probably be wise. This job could take at least 6-8 hours.
- Are you a plumber - Water faucets on the dock need to be serviced. Are you a sign painter - Signs on the dock need to be cleaned and touched-up. Are you a woodworker or carpenter - Dock ladders need to be fabricated.

Want to help? For details about any of these jobs or to volunteer now, contact Harry Faas at 884-6299 or Dave Wickland at 884.3163



Harry Faas, Dock Chair

DOCK WORK PARTY-SEPTEMBER 13TH

We need your help! Please join us at 10 am on September 13th for a Dock Work Party! We have many projects that need to be completed to spruce up the dock before the weather changes. There is a short list up at the dock of things that need to be done, but that is not all that we would like to accomplish. Even prior to the 13th, we would like to finish some of the projects that have been started but need bodies to help complete.

If you are willing and able to make it to the work party or can work before that date, please contact me prior to the 13th so we can organize the projects with those that can be there.

Please call Dave Wickland @ 884-3163.



“Treasure Hunt”

(LIC Road Pickup)

Sunday, September 28

Come join us at the

LIC Clubhouse at 1:00 pm

Thanks, Bob McFarlane

LIC Adopt-A-Road:

robertmcfarlane1@mac.com

253.884.1314

Events Report . . .

LET'S GIT'ER DUN at the LIC clubhouse . . . Mike Hays dug up the area around the light pole. Pat Thompson has developed a beautification plan for the area. So what's the hold-up? TIME & MONEY...MOSTLY TIME

- * A 5-HOUR JOB - The dug up area has to be weeded of grass and the rocks have to be removed. *This can be done with a hand cultivator OR something larger.* The grass along the edge has to be removed.
- * A 2 HOUR JOB - 2 yards of five-way soil cultivated into the area
- * A 3-HOUR JOB + HAULING - large rocks brought in & placed

THEN COMES THE FUN PART . . .

- Build elevations with 5-way soil
- Fertilize and plant
- Add gravel and medium rocks around plants
- *If ground cover cloth is used, 4-6 inches of gravel will be needed*
- Water plants consistently until established

Is there any one who would organize food? Since hard working people get hungry, but really don't want to lose time, it is nice to have self-assembled and finger foods on hand. Consider: A.M. muffins and fruit. P.M. veggies, dips, chips, & sandwich makings. *Please nothing that requires kitchen prep and clean-up. After a day of digging that is the last thing I want to do.*

Fall Work Party on September 13 - 10:00 a.m. - ?

GOT TIME? CALL YOU-KNOW-WHO @ 884 9157. Wouldn't it nice to have all the prep work complete so the planting could be done before the Fall Work Party! Hate to dig in the dirt? Check out the jobs at the dock (page 3).

JAZZ MUSETTE CONCERT - SEPTEMBER 20TH

Mark Runions has brought a wide variety of musicians to the LIC over the years. On September 20, he and the other members of Jazz Musette will be playing all the music you want to hear. Great for dancing, or just listening, this band has long been a favorite on the Key. If you had a chance to sample Williams barbecue at the fair - you will be pleased to know that Fred will be there. His ribs are a sure fire homesickness cure for this Texan.

A volunteer for Jazz Musette Dance Chair would be greatly appreciated.

FIBER ARTS - EVERY FIBER OF OUR BEING

Saturday, October 4, 2008 10 a.m. to 4 p.m.

Have you ever wondered about the process from sheep to shawl? How ... felting is done? ...a tutu is made? ... a loom is warped? ...a quilt quilted? If so, on the KP Harvest Fest Tour don't miss the free exhibit of **Fiber Arts - Every Fiber of Our Being** at the LIC, 4312 Key Peninsula Highway, South.

Through the ages the human drive to embellish even the most utilitarian items has resulted in a myriad of skills involved in the creation of fibers and fabrics. The goal of the day is to show the gamut of fiber arts - fine arts to utilitarian; traditional to modern; self-expression to commercial. Participants will be on hand to demonstrate and explain processes. Some participants will have equipment, materials, and/or original items for sale.

Main attractions will be tapestries and costumes provided by the PLU Scandinavian Cultural Center and Earl Sorrels' collection antique spinning wheels. The spinning wheels are documented, restored and in working order. Since Mr. Sorrels wants them to be used, invitations have been extended to area guilds to locate spinners. Individual spinners wishing to participate in the "spin-in" are welcome, (see contact).

Exhibits include selected items from Key Peninsula Historical Society fiber collection, an outdoor exhibit of antique farm equipment provided by Fred Leenstra, and a display of fiber arts resources from the Key Center Library collection.

Children's activities include: several elementary school knitters, demonstration of latch hook technique by Emily Ehrhardt, age 7; knot tying; fabric stamping.

Fiber related businesses are represented by Lois Henderson, Allyn Knit Shop & Spinning Supply; Peggy Viney, Crazy Kat Fiberhaus - needle work & lace making supplies; Donna Daily, totes; Robin Gould, specialized boat and canvas work; Jo Hamilton, pattern to product yacht fittings; Elsa Leyden, Longbranch Fiber Farm, wet & needle felting; Maureen Pfaff, Minter Creek Quilt Studio; Janice Bryant, Coopworth fleeces and rovings.

Besides demonstrations of hand & machine embroidery and quilting, weaving, knitting, appliqué, and cross-stitch, individual fiber artists will be on hand to share their knowledge. Some of the participating artists are: Jan Buday, Kumihimo braiding; Arlene Eagan, fiber and knitted silver jewelry; Lynn Hollowell, costumes from concept to tutu; Sarah Hoenig, needle tatting / 4-H; Dale Loy, basketry; Margo Macdonald, tapestry weaving; Reni Moriarity, crewel and filet crochet; Peg Robertson, weaving and natural dyes.

Address inquiries to Carolyn Wiley, LIC Events Chair, (253) 884 9157 or (253) 884-6022.



Carolyn Wiley, Events Chair

Beyond the borders 2008

Beyond the borders

Beyond the borders

Everyone seemed to have a great time!



Even the vendors indicated that they would like to be back next year. So Mark, thanks for starting a tradition. I can hardly wait to see what entertainments will be in store for us in 2009. *Submitted by Carolyn Wiley*

Once again Mark Runions put together an afternoon of wonderful music, Peg Bingham and crew provided magnificent desserts-the bakalava was "killer-good"; and the Two Waters Arts Alliance organized a perfectly beautiful art show and provided funds for performers.

Below are just some of the outstanding volunteers who made the day a success. Unfortunately the worksheets were earlier forwarded to Sue for recording and I hesitate to try to list all 38 volunteers from memory for fear some would be left out. Thanks to all of you who worked and especially to all of you who attended! The amount of work going into presenting an event is worth nothing if no one shows up!

Among volunteers putting in service Above and Beyond for BEYOND the Borders were:

- * Rob and Diana Home - not LIC Members, they just like the idea of this type of gathering;
- * Mike and Ann Runyons - new members who were there from set-up to take down;
- * Phill Ingram the Parking Czar;
- * Jeff and Christine Tritt-donors of the coveted Longbranch tee-shirts as well as handlers of shopping & bartending chores;
- * Mike Hays who saved the day on numerous levels-from sink leaks to stove malfunctions and electrical hook-ups;
- * Sue and Stu Stuhaug pre-post-and during event labor;
- * Laura Mosley who pitched in to help ice cookies for several hours and then joined the club-this lady travels with a valid food handler permit and an apron.

Other Dates to Remember

31 OCTOBER

Evergreen Elementary School PTA/LIC *"Trunk or Treat"* Halloween doings for KPS kids. Cars come decorated and armed with goodies for the trick and treaters. Games, food and hot drinks available inside the LIC. Begins at 6 pm- 8 pm. Free to Peninsula children.

19 NOVEMBER

Key Peninsula's "Friends of the Library"/LIC presents *Helen Thayer*. Helen (in her 70's) and her husband (in his 80's) are outdoor adventurers, and photographers (much of their work can and has been seen in National Geographic). Helen will speak on her solo trip on the Amazon. Next on their agenda is crossing Tibet (on foot). Helen is an extraordinary speaker. Don't miss this one. FREE

14 DECEMBER

"Kids N' Christmas" presented by Girl Scout Service Unit 22, U.S. Marine Corps "Toys for Tots" and the LIC. Santa Claus makes an early stop to Longbranch. The Marine Corps presents all participating children a gift. Girl Scout Service Unit 22 teaches an assortment of crafts so that those same children can make gifts for their family members. Cookies and warm beverages are provided. FREE.

31 DECEMBER

"New Year's Eve Dance" featuring the big band sound of *"Spring Fever"*. This is a dress up (semi formal) affair, with a catered hors d'oeuvre open buffet, and a midnight bottle of Champagne for every table. 8 p.m. -12:30 a.m. \$35 per person. No host bar.

LIC Summer Picnic August 20th



Fun was had by all!
Good to see everyone!
See you all at the next LIC gathering . . .

The Fall Great Escape Race . . .

On Sept. 27th we will have our Fall sailing race. The race starts at 10 AM with skippers meeting at 9AM. Entry fee of \$15.00 and we will race from Filucy Bay around green #3 at Nisqually Flats and back. This was a great race last time. There will be trophy's and some interesting crab festivities presented by Sandy Black. Hope to see you there. Sue and Stu have a new boat so we have a new competitor. For more information, contact Pat 884-5286.



GO NNA BE A BEAR

In this life I'm a woman. In my next life, I'd like to come back as a bear. When you're a bear, you get to hibernate. You do nothing but sleep for six months. I could deal with that.

Before you hibernate, you're supposed to eat yourself stupid. I could deal with that too.

When you're a girl bear, you birth your children (who are the size of walnuts) while you're sleeping and wake to partially grown, cute, cuddly cubs. I could definitely deal with that.

If you're mama bear, everyone knows you mean business. You swat anyone who bothers your cubs. If your cubs get out of line, you swat them too. I could deal with that.

If you're a bear, your mate EXPECTS you to wake up growling. He EXPECTS that you will have hairy legs and excess body fat.

Yup, gonna be a bear!

"Beary Fun" . . . Submitted by Marlies VanCise

Membership Report...

Membership Report;

The Longbranch Improvement Club would like to welcome new member Laura Mosely. Laura, who is an artist got right into the spirit of things during the Beyond the Borders festivities. With her food handlers card in hand and apron in the trunk of her car, Laura lent a hand to Peg Bingham, Carolyn Wiley and the busy kitchen staff. Thank You Laura and a big welcome.

A good time seemed to be enjoyed by the 80 or so members who braved the weather and came to the annual club picnic. Cooking, eating and general club camaraderie was done inside!!! \$70 was collected for the scholarship fund.

Many Thanks goes to Wally Johnson, who after I had made a complete mess of the grill, cleaned them. He also showed me the proper way that it should be done as well as how to properly use the dish washer. Thank you very much Wally. I just know this job was on the top of your list of "to do's", particularly after having just come from "The Home Port". At least you didn't have to cook. A big thank you also goes to Eloise Colbert, Babette Cook and Jeanne Weston for hostessing the event. Denny and Janice Prichard have sold their Eugene home and finally made the move here to Longbranch. Welcome home Denny and Jan. Pat Muchmore and Sharon Gearhart also look like they too will be full time folks. Good going! That's all Folks!



Submitted by Sue Stuhaug, MEMBERSHIP Chair

Key Peninsula Author's Evening

September 25th from 7-9PM

Sponsored by:

The Friends of the Key Peninsula Library

Among the authors featured will be Dick Dixon with his book "My Heroes Have Always Been Dogs." For those of you who have purchased the book, Dick will autograph them for you if you wish. There will also be signed copies for sale.



*Submitted by Richard Dixon,
Vice President of the LIC*

L I C C O N T A C T S

President ... Stu Stuhaug
884.3685 suestu@centurytel.net

Trustee-At Large ... Dave Wickland
884-3163 dwick@pacifictrade.com

Vice President ... Richard Dixon
884.2241 ramdixon@aol.com

Secretary ... Connie Hildahl
884.1400 rhildahl@centurytel.net

Treasurer ... Tim Heitzman
884.0577 timheitzman@earthlink.net

Bldg./Grounds Chair ... Mike Hays
884.9498 mhays2@msn.com

Dock Chair ... Harry Faas
884.6299 delilahhairymary@aol.com

Events Chair ... Carolyn Wiley
884.9157 c.wiley@mac.com

Membership Chair ... Sue Stuhaug
884.3685 suestu@centurytel.net

Dock Master ... Mark Jones
884.5653 / 884.5137 ^{Dock} Lmjones@centurytel.net

LIC Building Rentals ... Marlies VanCise
884.5608 / 884.6022 ^{Clubhouse} beachwoods@centurytel.net

LIC Bldg. Cleaning ... Jerrod /Angelina Landsberger
253.255.2380 LZ_services@msn.com

Hospitality/Greeter Meetings ... Carmen Davies
884.9128 cloudrider@cableseed.com

Kitchen/Food Services ... Norma Iverson
884.4564 vgiverson@@centurytel.net

LIC Adopt-A-Road ... Bob McFarlane
884.1314 robertmcfarlane1@mac.com

Scholarship ... Dick Dixon
884.2241 ramdixon@aol.com

Nature Trail Development ... Rich Hildahl
884.1400 rhildahl@centurytel.net

Office Volunteer ...
POSITION OPEN

Website Manager ...
Position Filled ...

LIC Historian ... Jackie Furrey
884.6438 blanche2004@msn.com

LIC Newsletter ... Norma-Jean Gibson
884.6556 normajeangibson@remax.net

WEBSITE: www.longbranchimprovementclub.org

EMAIL: lic@longbranchimprovementclub.org

Longbranch Improvement Club
 PO Box 111
 Lakebay WA 98349

Longbranch Classifieds

To place your ad here . . .

Longbranch classifieds are free for members, low-cost for the community. Call Norma-Jean 253.884.6556 or send your ad copy to normajeangibson@remax.net



Lake Bay Nautical

Nautical · Tropical · Beach Decor
 Home · Beach · Gifts · Nautical Instruments

Olympic Village Shopping Center
 5500 Olympic Drive NW, Gig Harbor WA 98335
 253.851.3366 www.lakebayproducts.com



At Home, 98349



Right Brain Creations

Pat Thompson
 Landscape Design

(253) 884-5286
sailinghorse@comcast.net

BEST of Edmonds Meats & Seafood Co.

Wally Johnson 360-649-8877

Snake River Farms American Kurobuta Port & Kobe Beef
 Free Range Draper Valley Chicken Fresh & Frozen
 Seafood Midwestern Corn Fed Beef

CUSTOM PACKS AVAILABLE
 Delivered to YOUR DOOR FRESH . . . Twice a Week



robin designs
 custom sewing & canvas works
robindesigns@hotmail.com

Marlies VanCise

TRAVEL HOUSE

253.884.5608



Licensed for 24 Years Specializing in
 International Travel, Cruises and Groups



Honey-Do Handyman

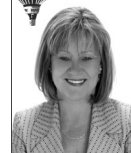
Projects Inside and Out . . .

Call Jeff
 253.884.1685

Your Ad
 Placed Here?
 Contact Norma-Jean



www.SoundNeighborhoods.com



Norma-Jean Gibson
 Real Estate BROKER Associate
 RE/MAX Town & Country

253.238.1538