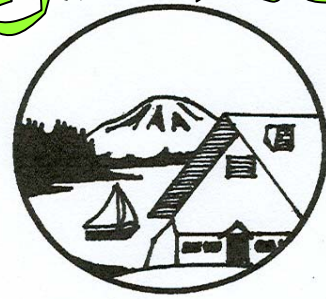


LIC NEWS



WEBSITE: www.longbranchimprovementclub.org

EMAIL: lic@longbranchimprovementclub.org

Presidents Letter . . .

The other day I shared "The Shooting of Dan McGrew" with a young boy. The rest of that day we called the kitchen the Malamute Saloon, we carried pokes for our gold dust, we drank "hootch" rather than pop, and we chatted up the lady known as Lou. It was a good day, not just because of the fun of reading that rollicking service poem but because in doing so we added a bit to our common culture. We learned what each of us meant when we used a particular word, and perhaps we came closer to understanding the emotional baggage that comes attached to every word we use. We, the old geezer and the young sprout expanded our personal sense of community.

Now, when the LIC serves up Kids N Christmas, our Halloween Trunk or Treat, when we hide Easter Eggs for the upcoming hunt or when we open up a stage to our Beyond The Borders summer concert we're not just supplying candy, toys or entertainment to those who come to our doors. We're opening the doors to the shared experience of our community, which is a way of saying we've opened our hearts. We're sharing a common experience that gives all participants more of a common language and in some ways helps erode the shells within which so many of us live.

We - the Longbranch Improvement Club - are offering a pair of college scholarships to south Peninsula kids this year. It's not just a dispassionate writing of a check. We're looking at a couple of kids and we're saying: "Hey, you and your dreams are important to us. You are valuable, you are important."

Most of us came out of a past these kids will only be able to read about, and these kids are going into a future most of us will never see. But by learning each other's words, by sharing the values of our community, we're helping preserve the values we brought to this narrow strip of land.



We share our values - not force them on others - with our aid to the hungry,

with the sometimes rowdy and sometimes romantic music of our dances, with May breakfasts on the dock and rainy trudges along roadsides clearing trash. It's how we build a common language of experience. I suspect we represent every hue of the human rainbow, most of the theologies, certainly the ranges of politics from crimson to azure with most a purplely mixture in the middle, from geezer to toddler and from rich to destitute. But it also seems to me that we have been forging a common language embracing respect. Which is not to say we do it perfectly, or perhaps not even well. **But we're going to be better at it tomorrow than we were yesterday.**

Read a poem to a kid. Chat with the next person in line at the Post Office when you're getting your mail. Slow down when you pass a person and dog strolling along our country lane. Expand your sense of community. It is about as much fun and pleasure and you can have.

Stu Stuhaug, President

Membership Report . . .

To date we have 81 paid memberships, with three of them being new members. The new members are Benjamin Jones (Mark's son), Mark and Laurie Patrick, and Denny and Janice Prichard. A big welcome to them.

In January, 56.5 membership work hours were produced. February saw 170 work hours with the bulk of them (118) coming from the folks that worked the "Feast or Famine" banquet. Total = 226.5 hours.

I'd like to bring some special attention to a few individuals who deserves our many thanks; Dale Case. If you notice the main hall is much roomier. Dale made the chair carts that carries all those fold-up chairs that were always collapsing on to the floor. Now they neatly fit under the stage; Lynn Carr who hand whittled the lintel (the log replacement piece that is a part of the North entry way; Norma Iverson and Peg Bingham, who may never recover after the "Feast or Famine" banquet. First, they discovered after beginning to serve the dinner, that the LIC dishes were put away dirty from some past event. Then to add insult to injury, the clean up crew failed to show up, so that they had even more dishes to do. It is this sort of thing that drives our hard working members right out of the LIC parking lot, never to return. You have the our profound apologies, particularly since yours truly and her husband (el presidente), who were home, sick in bed, were to be part of that clean up crew.

Sue Stuhaug, Membership Chair

General Meeting Minutes

MINUTES 2-20-2008 6:30 p.m. potluck

Our President, Stu Stuhaug, called the meeting to order. It was MSP that January General Meeting minutes were accepted as published.

Old Business:

Tim Heitzman, our Treasurer, reported Windows is installed on our office computer.

Dean Latshaw, dock chair, reported additional fire extinguishers have been added at the dock.

Jim McDonald presented the following motion. Richard Dixon seconded it. "Everyone with a boat down at the dock must have Coast Guard fire prevention equipment on board." This motion did not pass.

Sue Stuhaug, membership chair, reported for 2008 there are presently 78 paid memberships. As of March 31st, a newsletter will be sent only to paid memberships.

Carolyn Wiley, events chair, reported on the success of the "Feast or Famine" event held at the LIC earlier this month. Our next event will be "Suds & Spuds" on March 8th.

Bob McFarland, adopt-a-road chair, stated road clean-up will be held 4 times a year. The next clean-up will be held March 8th, meeting at the LIC at 10:00 a.m..

Vice-President Richard Dixon asked interested members to contact him regarding membership on the Scholarship Committee.

It was MSP that set up of our sound system be part of the activities of the Building Committee.

A request was made by our President for the Nominating Committee members.

The LIC would like to thank Marilyn Hazelquist for her years of service as Raffle Chairman.

Mike Maroney will continue to offer Emergency Response classes in our area. All costs are covered by the Salvation Army. Please contact Mike if you are interested.

*Respectfully submitted,
Connie Hildahl, Secretary*

Dock Report . . .

It is starting to dry out a little at the marina , which in turn means more projects that were able to do. We only had a couple of water pipe breakages this winter so we're ok there.

We will put a full court press this spring to complete the "Green Marina" project with signs completed and approved and have yet to purchase approved recycling containers. Then we should be ready for inspection. This of course does not speak of the cosmetic portion of the projects that need attention or preventive maintenance. We have complied with the Fire inspector's request for two more extinguishers by the dinghy dock and the end of C dock so please walk around and familiarize yourself with the locations, you never know. I would like to remind the boathouse owners that they are responsible for their own house. Please contact me if you have any questions about your boathouse.

For the boat owners, now is a good time to assess any projects such as dock lines, bilge pumps, batteries, etc. I haven't seen too much activity lately on a few member's boats. Remember, you're only 30 feet from the bottom of the bay, give or take.

I would like to thank Gig Harbor, Carling, Totem, T.O.A., Kingston, O.S.&P., Fircrest, Carver Cruisers, T.T.P., DeMoines, Shelton, Viking, S.S.S.S., Corinthian, T.Y.C., Cascadia Trawler Crawlers, and Yachta Yachta Yacht
Continued on Page 3...

Clubs and the Pastol Bay and many solo sailors and the ones I couldn't pull off the top of my head for all their support and consideration. We love to be able to offer as much transient moorage as we do and can only do it if it is used, which is why I am happy to report that the Mercantile has started the demo project which may mean the construction may not be not far away. Yes, we have a million dollar view, but it would be real nice to have a cold beer to go with it. I see a bright year of fun, relaxation and commerce at the marina this year with all the good participation of the L.I.C. members and leadership. Please, when parsing out your member hours this year keep the marina in mind, it pays the club back many fold.

I would also like to ask a for a couple of work parties soon before official spring . . .



Sat. March 29 at 11:00 and Tues. April 8 at 11:00 for those who can't make a weekend?

WORK PARTY: Projects will be appropriate to the talent we have. Feel free to call me at anytime and let me know any ideas or concerns you may have
LIC Marina office 253- 884-5137
emergent cell 253 732-9526 (it's your marina).

Now, for a quick personnel note.

As most of you know Laurie and I have been given the biggest challenge of are lives in October - Laurie's diagnosis of cancer. After a couple of weeks spent picking our jaws up off the ground and this insidious disease running a muk throughout her body attaching itself to everything it shouldn't. We decided to fight

and I mean fight, the chemo, diet, spirit, and hope, and faith. After all, the body created it, why can't it kill it? Along with good meds., stress control etc. We received a wonderful chemistry report from Dr. Colman on Monday which is very encouraging . . .

This could not have happened without the support of L.I.C. and few of its cherished members!

I mean notes, flowers, phone calls, e-mails, meal prep, firewood, prayers. This adventure does continue, and will for a very long time. Most of the individuals who put foot to ground speaks volumes of the club's fiber and backbone. These people can not be praised enough. They don't just talk it, they walk it.

God bless you all and thank you!
Mark Jones, Dock Master

Of Special Note: Our own club VP, Dick Dixon has spent the last year writing a book and it has very recently been accepted for publishing. The title of the book is "My Heroes Have Always Been Dogs". It's a true story about five dogs Dick has had the fortune to share his life with over the years. Two of the dogs were heroes in the Vietnam conflict. The story takes place over a span of some forty years and over half the world. It's Dick's first attempt at professional writing. He has offered a reading at an LIC club meeting when the book appears in print, sometime this year.



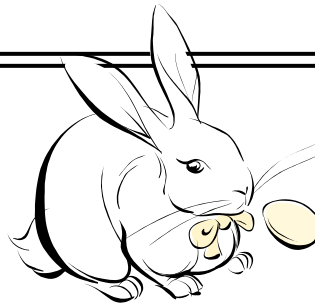
My Heroes Have Always Been Dogs



**Longbranch Improvement Club
March/April Calendar of Events**

March 5 -Dock Committee Meeting, 7pm: LIC
 March 8-"Road Clean-up". 10am: LIC
 To volunteer call Contact person Bob McFarland, 884-1314
 March 8- The 2nd annual "*Spuds and Suds*" a preliminary party celebrating St. Paddy's day. Featuring the Irish Folk Duo, Mike Saunders and Dale Russ. 7:30pm: LIC.
 Members and guests \$10. There will be dart competitions, games, rollicking music and all the spuds you can eat. Geoff Bailey is heading up this event.
 For ticket information contact Carolyn Wiley 884-9157.
 March 12-LIC Board Meeting. 7pm: LIC
 March 19-General "*Dessert*" Meeting. 7pm: LIC
 March 22-LIC & Evergreen Elementary, PTA *Easter Egg Hunt* for all peninsula children.
 Debbie Ehrhardt-884-6382 and Traci Michel-884-1010 are heading up this event.

April 2-Dock Committee Meeting. 7pm: LIC
 April 9-LIC Board Meeting. 7pm: LIC
 April 16-General "*Potluck*" dinner Meeting. 6:30pm: LIC
 April 19-"Spring Clean up" 10am: LIC



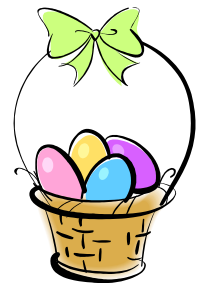
Looking for a
Hoppin' Good
Time?

Yes, it's another family event planned for our community by Debbie Ehrhardt and Traci Michel. Helpers will be needed to set-up age appropriate hunting areas; monitor parking (remember the crowd at Trunk or Treat?); food service & kitchen-cookie & beverage distribution; and post-event clean-up.

Mark you calendar and join us...

**1st Annual LIC
Egg-Stravaganza!**

Age Appropriate
Egg Hunting Areas ...
Cookies and Juice
Coffee



Hello Treasure Hunters,

A road pickup is planned 3/8/08. We'll gather at the LIC and head out from there. I'll have the signs, vests, bags, etc. There will be coffee and muffins available. We'll likely take about 2 hours. Let me know yea or nay about your coming so I can order an appropriate number of vests.

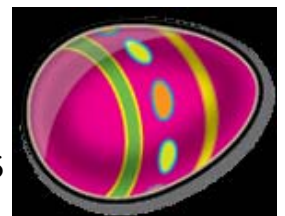
Thanks, Bob McFarlane
robertmcfarlanel@mac.com
(253) 884-1314



Be sure and
BRING GLOVES
10 a.m. Saturday,
March 8th, 2008.

**March 22, 2008
1:00 p.m. - 2:00 p.m.**

Longbranch
Improvement Club
4312 Key Peninsula Hwy S



For information or to volunteer:
Traci Michel 884-1010
Debbie Ehrhardt 884-6382

KPCS Food Bank Benefit



FEAST OR FAMINE

Fat Tuesday Lunch Banquet

February 5 6:30pm - 8:30pm

Longbranch Improvement Club

4012 Key Peninsula Highway S.

Tickets \$7 at Sunnycrest Nursery

Call 847-9157 or 884-4440 before Jan.31

Carolyn Wiley Penny Gazabat
c.wiley@mac.com kpcsdirector@centurytel.net

In partnership with

Longbranch Improvement Club, Key Peninsula Community Services,
Key Peninsula Family Resource Center and Longbranch Community Church

HUGE Thank You!

**It was a HARD SELL -
“\$25.00 for a Bowl of Rice!!\$?\$\$?!”
“You Gotta be Kidding!”**

However, generous LIC members, friends, neighbors, and strangers were intrigued by the idea of learning about world-wide food distribution, and pitched in to raise approximately \$4000.00 for the Key Peninsula Community Services Food Bank. There was a lot of positive feed back from the 87 attendees, and many expressions of interest in supporting a similar event in future. Feedback will be incorporated in planning a similar event for 2009. The success of the event can be credited to Vicki Biggs who did a fantastic job of chairing the event, and coordinating involvement of the primary participating organizations-LIC, Key Peninsula Community Services, Key Peninsula Family Resource Center and Longbranch Community Church. Vicki was also very effective in lobbying the Key Peninsula Business Association for up-front expense support. Because of her efforts there was broad based community support in the form of in-kind and monetary donations. Over \$500.00 was contributed by these businesses, organizations, and individuals:

Dear L.I.C. Members,

Everything was Perfect . . .

A Huge Thank You to your organization for hosting the first Feast or Famine Banquet.

I'm so glad that Carolyn and Vicki approached me with this idea as a fund raiser for the Food Bank. Everything was perfect and it was well attended.

We can't wait for next year!! I look forward to growing opportunities for future partnerships with LIC!

Thanks again,
Penny Gazabat
Executive Director- KPCS

SPECIAL THANKS: Carolyn Wiley herself did a tremendous amount of work on the Feast or Famine: writing letters, collecting the pottery bowls for sale, composing coupons and tickets to name a few things. It was a team effort and she is not giving herself any credit.

- Home Port Restaurant & Lounge
- Key Peninsula Community Services
- Key Peninsula Fire Department
- Key Peninsula Ministerial Association
- Lake Kathryn Village
- Longbranch Community Church
- Nilsen Woodworks
- Peninsula Market
- Ravensara Drive -Thru Expresso
- Safe Streets
- Sound Credit Union
- Sunnycrest Nursery
- Travel House Inc.
- Tote It Around/Donna Daily
- Danna Webster
- Anonymous Donors

Continued on Page 6

Respectfully Submitted, Thanks - Vicki Biggs

Special THANKS to:

- ◆ Vicki Biggs, Penny Gazabat, Arlyce Kretschman
- ◆ Norma Iverson & Peg Bingham who put in an incredible number of hours in planning, purchasing, food service, kitchen management, and clean-up
- ◆ Wally Johnson and Lu Smith who cooked for the event
- ◆ Dave and Paula Wickland who donated a model of Blue Nose for the silent auction, Check it out on your next visit to the Home Port
- ◆ F.I.N.E. Mud Hens-Karen Craven and Ginger Kryger-who donated the array of hand thrown soup bowls that were sold at the event
- ◆ The members of the Ruth Circle of the Longbranch Community Church who made The dried soup mixes that were sold
- ◆ And all the LIC members who participated as volunteers and attendees

*Submitted by, Events Chair
Carolyn Wiley*

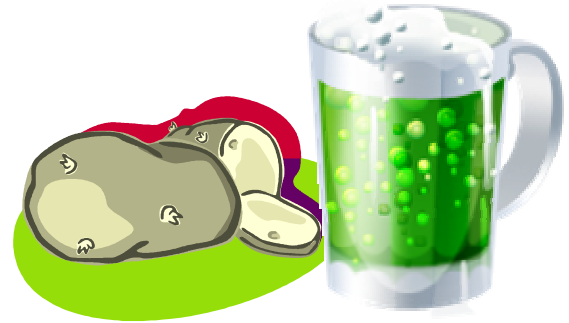
April 8, Events Planning Meeting 7:00 p.m. at LIC.

Everyone is invited to attend. Mark you calendar. Bring your ideas for improving a particular event, or events in general. Bring your ideas for new events to be tried. So there are adequate snacks, please let me know if you plan to attend.

If you can't attend, but want to provide input, please, phone Carolyn Wiley at (253) 884-9157, or e-mail <c.wiley@mac.com>. Hate mail, anonymous letters & critiques can also be mailed to LIC, P.O. Box 111, Lakebay, WA 98349--Attention: Events.

Spuds 'n Suds

Saturday, March 8, 2008
7:30 to midnight
\$10.00 per person



Things to do for St. Paddy's Day Event:

- ◆ Compose limerick
- ◆ Find dancing shoes
- ◆ Ask a friend to come along
- ◆ Don't forget to get your tickets!

In the interest of economy and adequate food and drink, please call Carolyn Wiley (253) 884-9157 to make reservations for you and your guests. You can pay at the door, but having a pre-event head count is really helpful.

Volunteers still needed for:

Set up at 10:00 a.m. on Saturday.
After event clean-up & take-down
Kitchen clean-up

Ticket Reservations and to Volunteer:

Geoff Baillie 253 884-3951
Carolyn Wiley 884-9157

*Submitted by Events Chair,
Carolyn Wiley*

YOU HELP NEEDED: Does anyone know of a local company that makes professional signs? (Our beach sign was set on fire by some bad character) Please call Dick Van Cise at 884-5608.

NOTE: Heading up the Scholarship effort now is Dick Dixon. Thanks Dick!

New “Enhanced” Driver's License in WA . . .

The Washington Department of Licensing is ready to start the process of verifying citizenship to issue enhanced driver's licenses that will function like a passport for those who re-enter the U.S. by land after trips to Canada.

Obtaining the enhanced license is voluntary. Applicants can call toll-free 1-866-520-4365 to make an appointment to apply in person at 11 participating Licensing Service Offices throughout the state.

All February times are already full, and Licensing personnel are booking appointments for March. Estimated time for issuance of a new license is two to three weeks after the appointment.

Applicants will need documents proving their U. S. citizenship, identity and Washington state residency.

The new license costs \$15.00 more than a regular license and is valid for land or sea border crossing between the U. S. and Canada, Mexico, Bermuda and the Caribbean.

Enhanced license include a radio frequency identification device that can be scanned at border crossings.

More information: www.dol.wa.gov
Marlene Barrington NBC/NBF/IOBG/RBAW

Submitted by Theresa Gano

L I C C O N T A C T S

President . . . Stu Stuhaug
884.3685 suestu@centurytel.net

Vice President . . . Richard Dixon
884.2241 ramdixon@aol.com

Secretary . . . Connie Hildahl
884.1400 rhildahl@centurytel.net

Treasurer . . . Tim Heitzman
884.0577 timheitzman@earthlink.net

Past President . . . Linda LeBlanc
884.1499 L8161@hotmail.com

Bldg./Grounds Chair . . . Mike Hays
884.9498 mhays2@msn.com

Dock Chair . . . Dean Latshaw
884.0808 baylakebum@centurytel.net

Events Chair . . . Carolyn Wiley
884.9157 c.wiley@mac.com

Membership Chair . . . Sue Stuhaug
884.3685 suestu@centurytel.net

Dock Master . . . Mark Jones
884.5653 / 884.5137 ^{Dock} Lmjones@centurytel.net

LIC Building Rentals . . . Marlies VanCise
884.5608 / 884.6022 ^{Clubhouse} beachwoods@centurytel.net

LIC Bldg. Cleaning . . . Jerrod /Angelina Landsberger
253.255.2380 LZ_services@msn.com

Hospitality/Greeter Meetings . . . Carmen Davies
884.9128 cloudrider@cableseed.com

Kitchen/Food Services . . . Norma Iverson
884.4564 vgiverson@@centurytel.net

LIC Adopt-A-Road . . . Bob McFarlane
884.1314 robertmcfarlane@mac.com

Scholarship . . . Dick Dixon
884.2241 ramdixon@aol.com

Nature Trail Development . . . Rich Hildahl
884.1400 rhildahl@centurytel.net

Office Volunteer . . . Harry Faas
884.6299 delilahhairymary@aol.com

Website Manager . . . Bob Mazur
884.1061 rhmazur@harbornet.com

LIC Historian . . . Jackie Furrey
884.6438 blanche2004@msn.com

LIC Newsletter . . . Norma-Jean Gibson
884.6556 normajeangibson@remax.net

Longbranch Classifieds

To place your ad here . . .

Longbranch classifieds are free for members, low-cost for the community. Call Norma-Jean 253.884.6556 or send your ad copy to normaJeanGibson@remax.net



www.SoundNeighborhoods.com



Norma-Jean Gibson
Real Estate BROKER
RE/MAX Town & Country
253.238.1538



At Home, 98349



Right Brain Creations

Pat Thompson
Landscape Design

(253) 884-5286
sailinghorse@comcast.net

BEST of Edmonds Meats & Seafood Co.

Wally Johnson 360-649-8877

Snake River Farms American Kurobuta Port & Kobe Beef
Free Range Draper Valley Chicken Fresh & Frozen
Seafood Midwestern Corn Fed Beef

CUSTOM PACKS AVAILABLE
Delivered to YOUR DOOR FRESH . . . Twice a Week



robin designs
custom sewing & canvas works
robindesigns@hotmail.com
253.884.3030

Marlies VanCise

TRAVEL HOUSE

253.884.5608



Licensed for 24 Years Specializing in
International Travel, Cruises and Groups



Honey-Do Handyman

Projects Inside and Out...

Call Jeff
253.884.1685

FISH FLASH® No Drag Flasher®

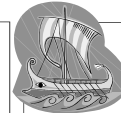
Fight the Fish, NOT the Tackle!



Big Al's Tackle Company, Inc.

Al Hazelquist, OWNER (800)535-3350

www.fishflash.com



Lake Bay Nautical

*Nautical · Tropical · Beach Decor
Home · Beach · Gifts · Nautical Instruments*

Olympic Village Shopping Center
5500 Olympic Drive NW, Gig Harbor WA 98335
253.851.3366 www.lakebayproducts.com

LONGBRANCH IMPROVEMENT CLUB NEWS . . . PAGE 8

Longbranch Improvement Club
PO Box III
Lakebay WA 98349